

DE AT CH NL ES IT SE

NO FI DK IS EE LT LV

LANDMANN Germany GmbH
Stormarnring 14
22145 Stapelfeld
Deutschland

KUNDENSERVICE

Am Heisterbusch 1

19258 Gallin

Deutschland

Tel: +49 40 67573 190

E-Mail: service@landmann.de

Website: <https://landmann.de>

PL CZ SK RU

LANDMANN Polska Sp. z o.o.

ul. Kuziennicza 13b

59-400 Jawor

Polska

Tel: +48 76 870 24 61

E-Mail: landmann@landmann.pl

Website: www.landmann.pl

HU RO BG GR SI

HR BA RS ME

LANDMANN Hungária Kft

Keresztúri út 198

H-1106 Budapest

Hungary

Tel: +36 1 433 62 63

E-Mail: infohun@landmann.eu

Website: www.landmann.hu

Modell

22169

22173

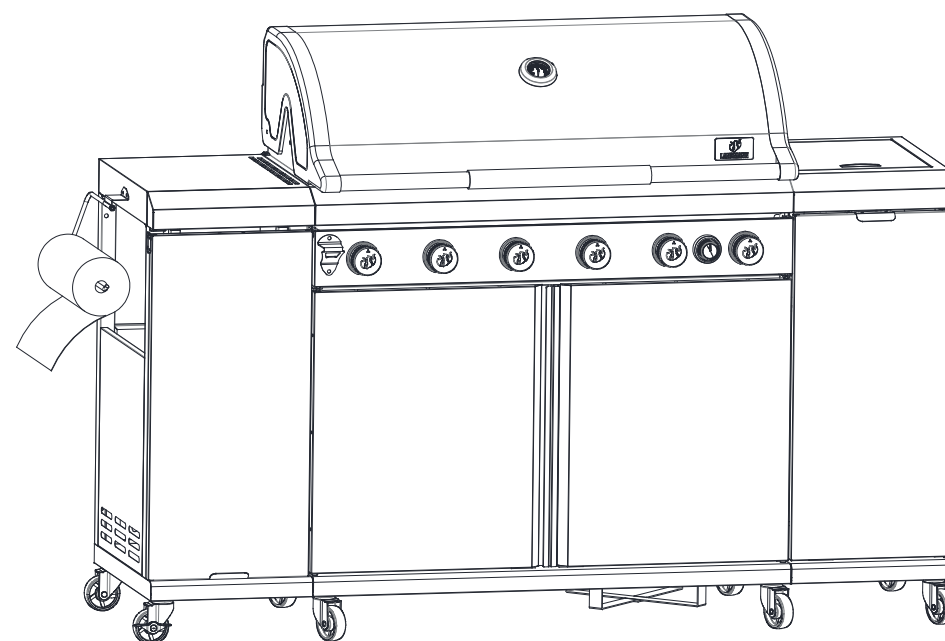


LANDMANN

HOME OF FIRE

GASGRILL 6.1 MAXX

Montageanleitung



SV Sida 1

FI Sivu 3

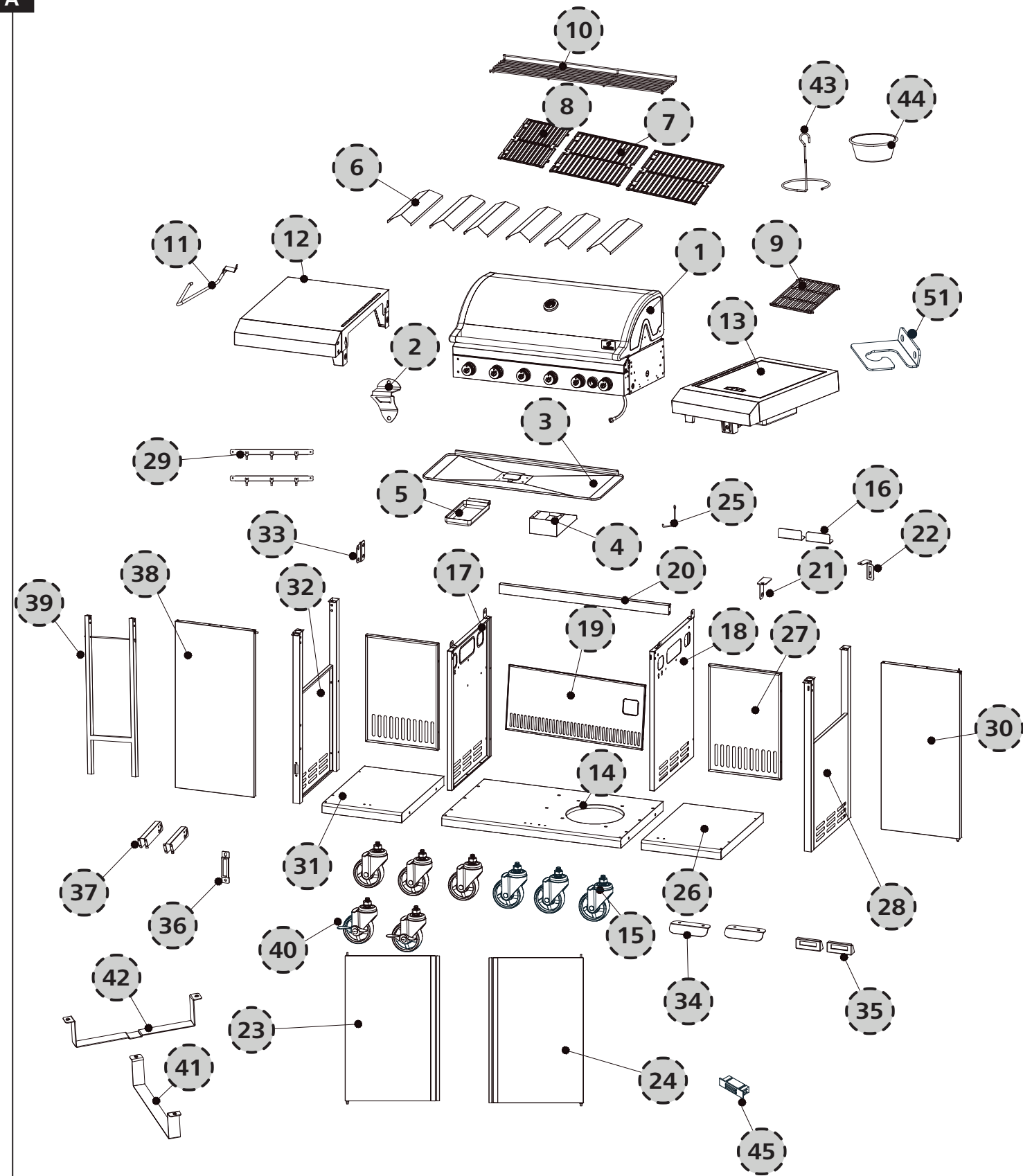
EN Page 5










Vik ut den här sidan innan du läser monteringsanvisningen. På baksidan hittar du alla avbildningar som anvisningarna hänvisar till.

Käännä tämä sivu esiin ennen asennusohjeen lukemista. Kääntösivulta löydät kaikki kuvat, joihin ohjeessa viitataan.

Open this page before reading the assembly instructions. On the back you will find all the illustrations which are referred to.

A

- A**  M6x12 41x
 - B**  M4x10 48x
 - C**  M6x40 4x
 - D**  M6x40 4x
 - E**  M6 4x
 - F**  4x
 - G**  M4 1x
-  x 2

B